

Update package 745
April 2020



What's new Update package

April 2020

745

PANDORA FMS 7.0 NG

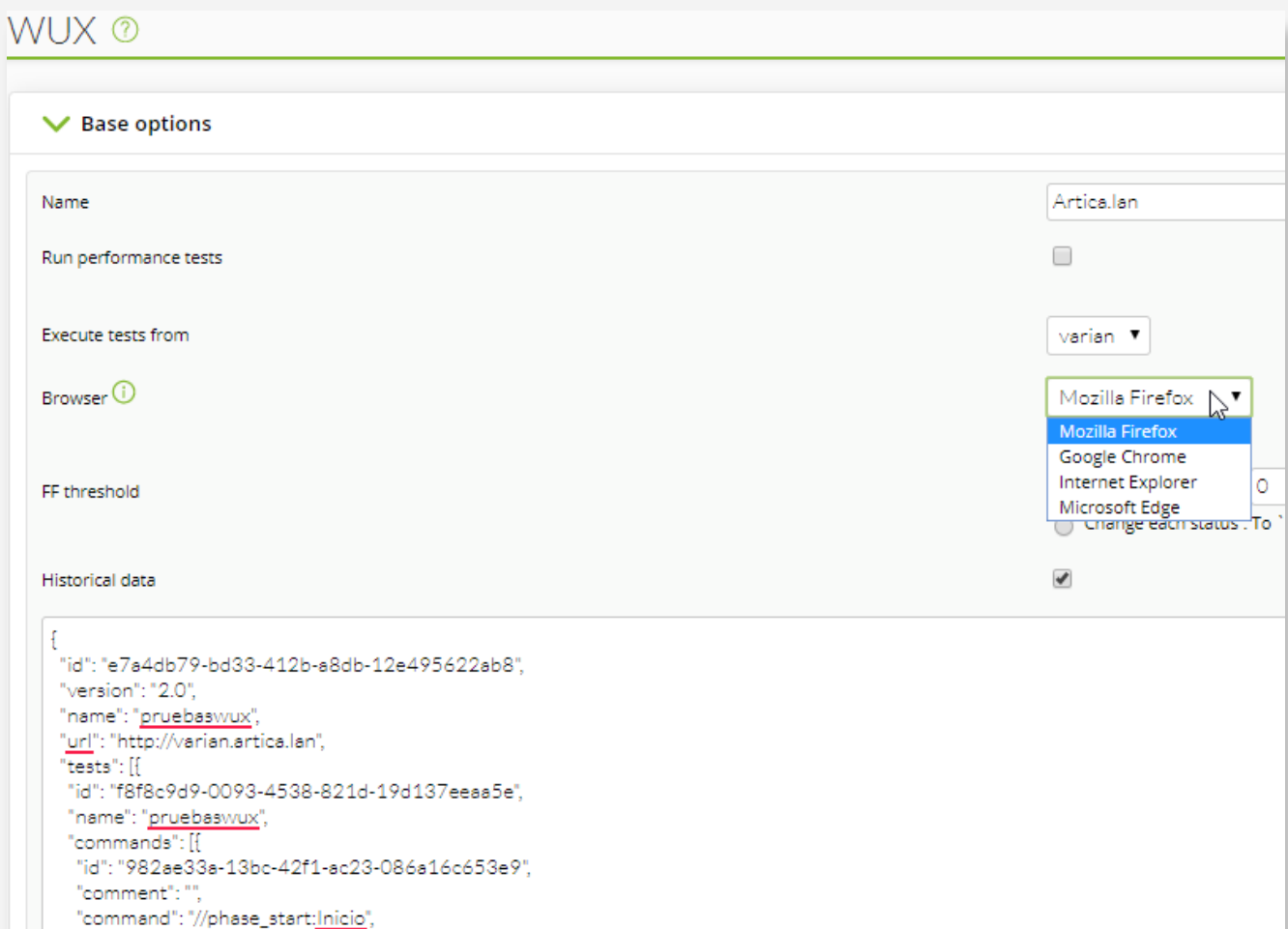
pandorafms.com

NEW FEATURES AND DEVELOPMENTS

More powerful User Experience Monitoring (WUX)

In this 745 release, **WUX** monitoring has been updated to the latest Selenium 3 versions. You may now use the official Selenium IDE extension for Chrome or Firefox and use all the **new screenshot methods** it enables.

Well, that's not everything: the view of the transactions performed through the WUX process has also been enhanced, making it much more user-friendly.



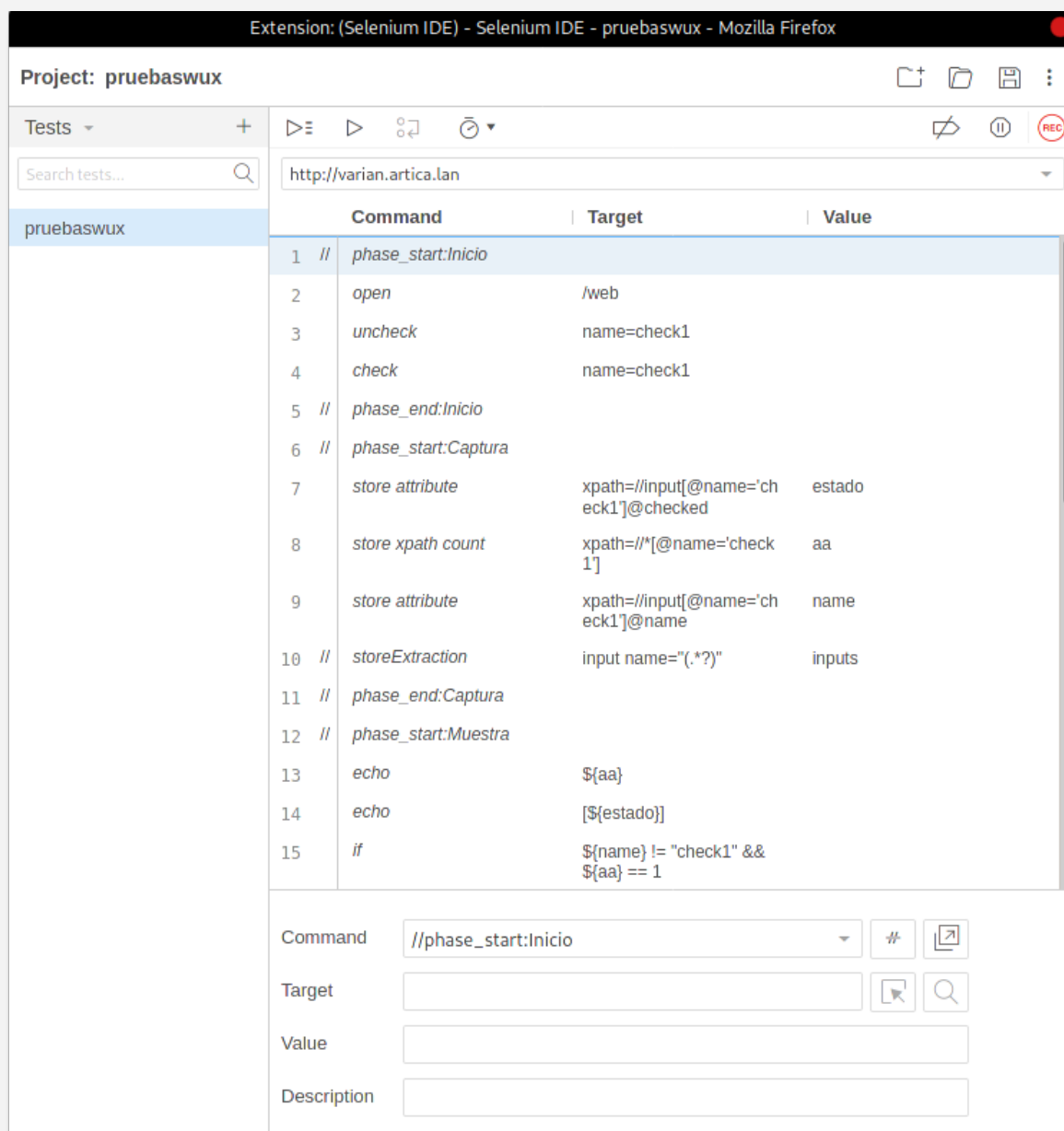
The screenshot shows the WUX configuration interface. At the top, there is a header with 'WUX' and a help icon. Below it, a section titled 'Base options' contains several settings:

- Name:** Artica.lan
- Run performance tests:**
- Execute tests from:** varian
- Browser:** A dropdown menu is open, showing options: Mozilla Firefox (selected), Mozilla Firefox, Google Chrome, Internet Explorer, and Microsoft Edge.
- FF threshold:** 0
- Historical data:**

At the bottom, there is a JSON configuration snippet:

```
{
  "id": "e7a4db79-bd33-412b-a8db-12e495622ab8",
  "version": "2.0",
  "name": "pruebaswux",
  "url": "http://varian.artica.lan",
  "tests": [
    {
      "id": "f8f8c9d9-0093-4538-821d-19d137eeaa5e",
      "name": "pruebaswux",
      "commands": [
        {
          "id": "982ae33a-13bc-42f1-ac23-086a16c653e9",
          "comment": "",
          "command": "//phase_start:inicio",

```



New dashboards

New dashboards have been added, which are easier to create, edit and customize. In addition, they can be used as custom screens for each user, who will have the possibility to create their own views including maps, events, visual console views or tree views, among others.

The new dashboards will allow you to set the visual consoles and other components in **slideshow** mode, through which the screens will automatically rotate on the monitor. After this changes, previous dashboards must be configured again since their elements might be misplaced.

Pandora FMS the Flexible Monitoring System

Enter keywords to search

Sancho #Enterprise

Tree view

- Sistemas Externos (41 : 1 : 4 : 5 : 32)
 - Hosting Produccion (15 : 3 : 5 : 7)
 - OVH (9 : 1 : 2 : 6)
 - Abraxas (2 : 1 : 1)
 - abraxas.artica.es (13 : 13)
 - ravenholm.artica.es (7 : 1 : 6)
 - Domino (2 : 2)
 - blackhole.artica.es (24 : 24)
 - domino.artica.es (13 : 13)
 - Wheels (3 : 3)
 - BillPuertas (1 : 1)
 - Gatomon (1 : 1)
 - Skullgreyton (1 : 1)
 - OVH Abraxas (48 : 12 : 36)
 - OVH Domino (19 : 6 : 13)
 - abstergo.artica.es (41 : 12 : 29)
 - fenix.artica.es (67 : 2 : 65)

Enterprise view

Groups status

Group	OK	Warning	Critical	Unknown
Demos	16	0	2	1
Infraestructura	325	0	23	0
Network	23	0	1	1
Servicios de Artica	138	0	1	1
eHorus	844	0	1	0
Hosting Produccion	155	0	2	0
QA	38	0	0	0
Sistemas Internos	8	0	1	0
Webs	52	0	1	5

List of latest events

Host	Module	Status	Time
cam.salamanca	Module 'SEC[fp_port]' is going to NORMAL (1)	OK	3 m 53 s
Nuevo server pandorafms.com	Module 'Use CPU php-fpm' is going to NORMAL (9)	OK	6 m 05 s
cam.salamanca	Module 'SEC[fp_port]' is going to CRITICAL (0)	Critical	8 m 47 s
mona.artica.es	Module 'Packet Loss' is going to NORMAL (8)	OK	9 m 51 s
Nuevo server pandorafms.com	Module 'Use CPU php-fpm' is going to CRITICAL (93.3)	Critical	11 m 05 s
Unknown	Warmup mode for events ended.	Unknown	11 m 05 s
cam.salamanca	Module 'Host Alive' is going to NORMAL (1)	OK	12 m 23 s
Unknown	Warmup mode for unknown modules ended.	Unknown	15 m 52 s
cam.salamanca	Module 'Host Alive' is going to CRITICAL (0)	Critical	17 m 28 s
Unknown	Warmup mode for alerts ended.	Unknown	19 m 22 s

General visual maps report

- Community
- eHorus / OPGuardian
- Imagen Corporativa
- Nightlies Centos Debian eHorus
- Nightlies develop
- Nightlies SUSE Windows
- Soporte
- Travis CI and Gitlab CI
- [S] eHorus
- [S] SSL Checks

Service map

Servicio de soporte al cliente

Legend

- Services: Critical (Red), Warning (Yellow), OK (Green), Unknown (Grey)
- Agents: Critical (Red), Warning (Yellow), OK (Green), Unknown (Grey)
- Modules: Critical (Red), Warning (Yellow), OK (Green), Unknown (Grey)

Pandora FMS the Flexible Monitoring System

Enter keywords to search

Dashboard

Agent module graph

122 / Connections opened / Unit conn: Min:16.0 Max:195 Avg:109.6

Defined custom graph

Network map

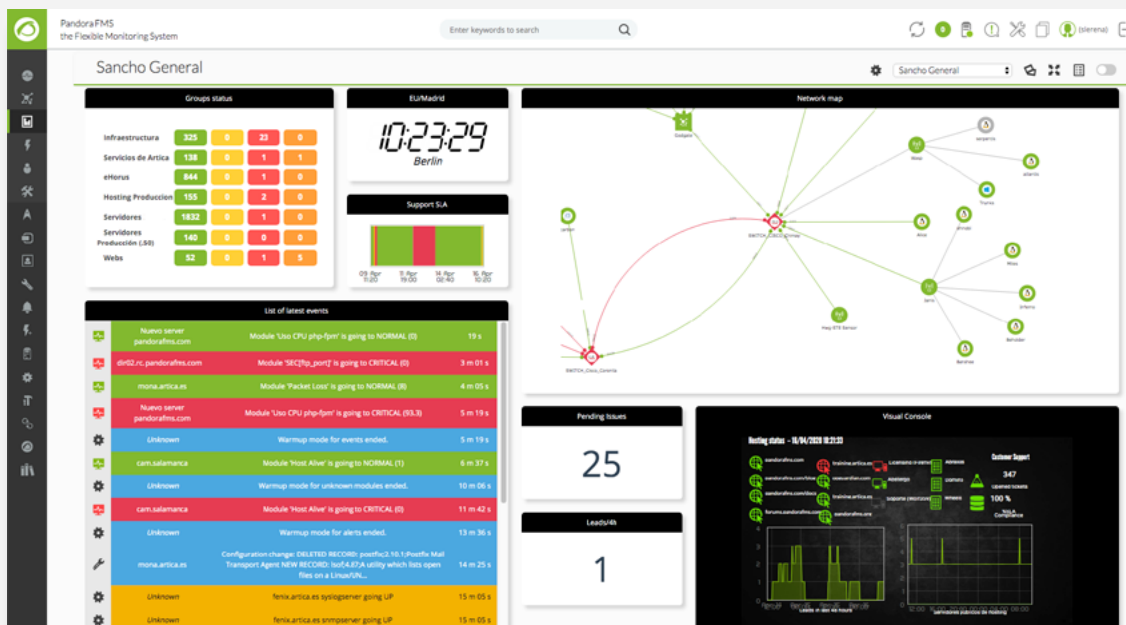
Clock

10:38:37
Berlin

Tree view

- Applications (2 : 1 : 1)
- Servers (258 : 88 : 19 : 7 : 144)
- Unknown (1 : 1)

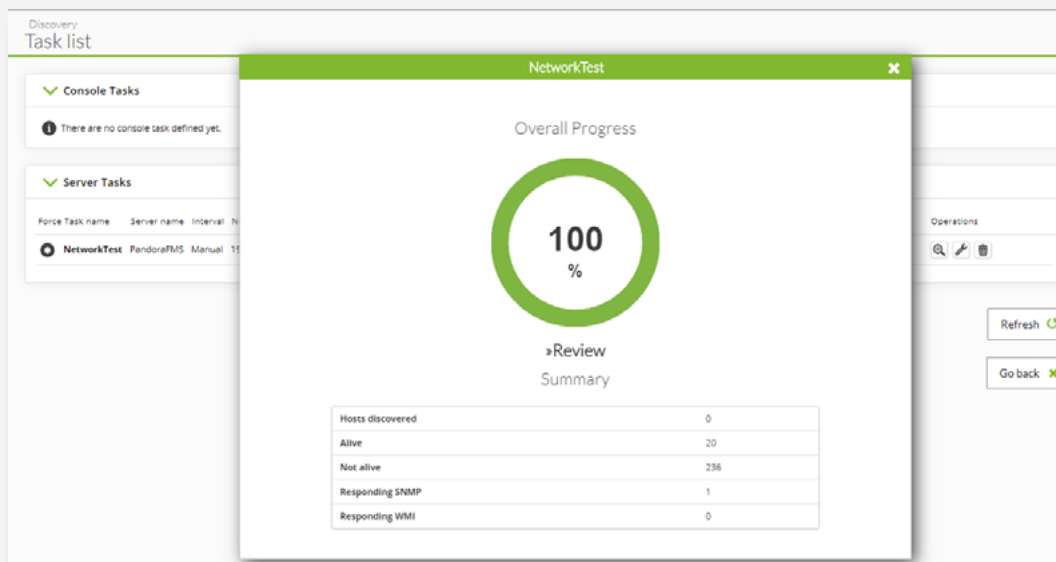
Module histogram



New detection mode for hosts in Discovery

A new **network scanning mode** has been added to the **recognition system**, and default templates have been incorporated to remotely detect and monitor applications, databases and a large number of network computers.

Once scanning is finished through the recognition task, Pandora FMS will display the results obtained and then all the elements found can be validated.



Discovery / Host & Devices / NetScan definition / NetScan features

"NetworkTest" features

Auto discover known hardware ?

Module templates ?

- None
- Basic Monitoring
- Basic DMZ Server monitoring
- Linux Server with SNMP**
- MySQL
- Network Management
- Oracle
- Windows Active Directory
- Windows Antivirus
- Windows DNS
- Windows Exchange
- Windows Hardware
- Windows IIS
- Windows LDAP
- Windows MDSTC

Review results ?

Apply autoconfiguration rules ?

SNMP enabled

SNMP version v. 2c ▾

SNMP communities to try with ?

- public ×

WMI enabled

Credentials to try with

- win-advanced-1
- win-advanced-2
- win-advanced-3
- win-base**
- win-base2

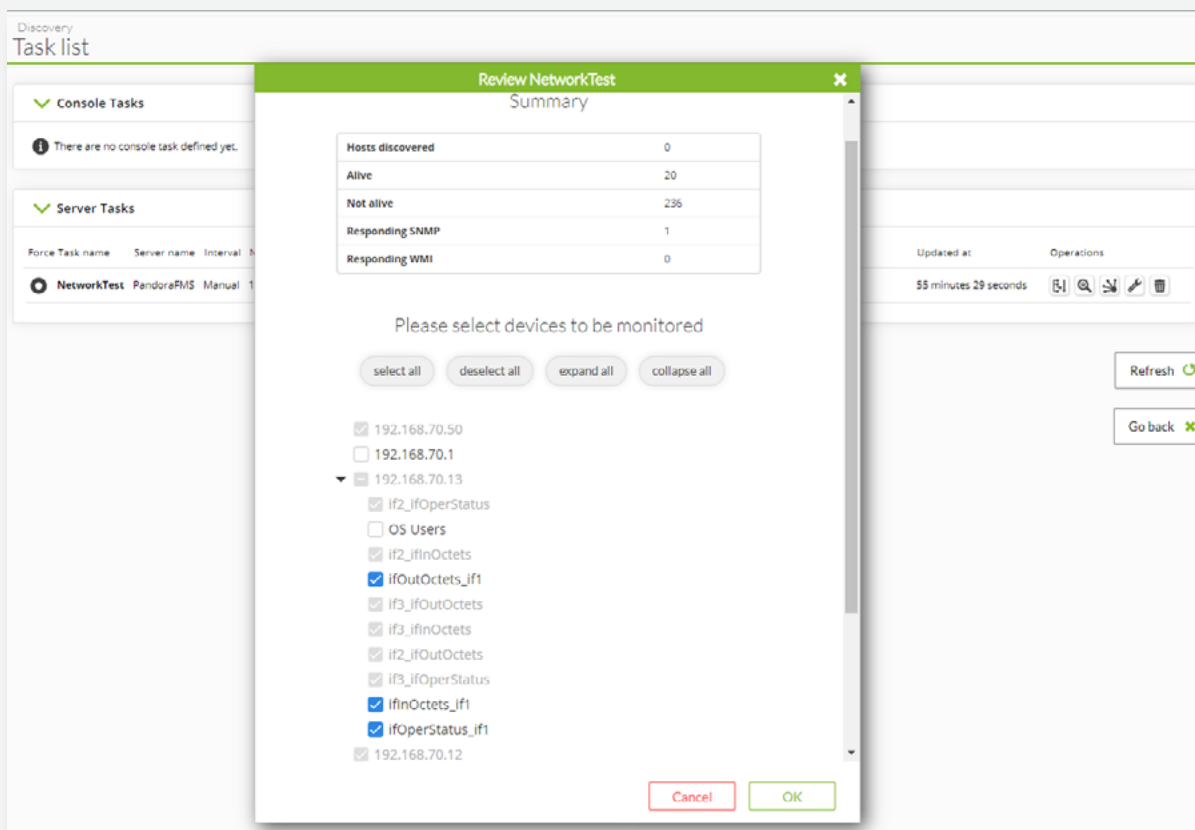
OS detection

Name resolution

Parent detection

Parent recursion

VLAN enabled



Monitor and agent total time in the same state

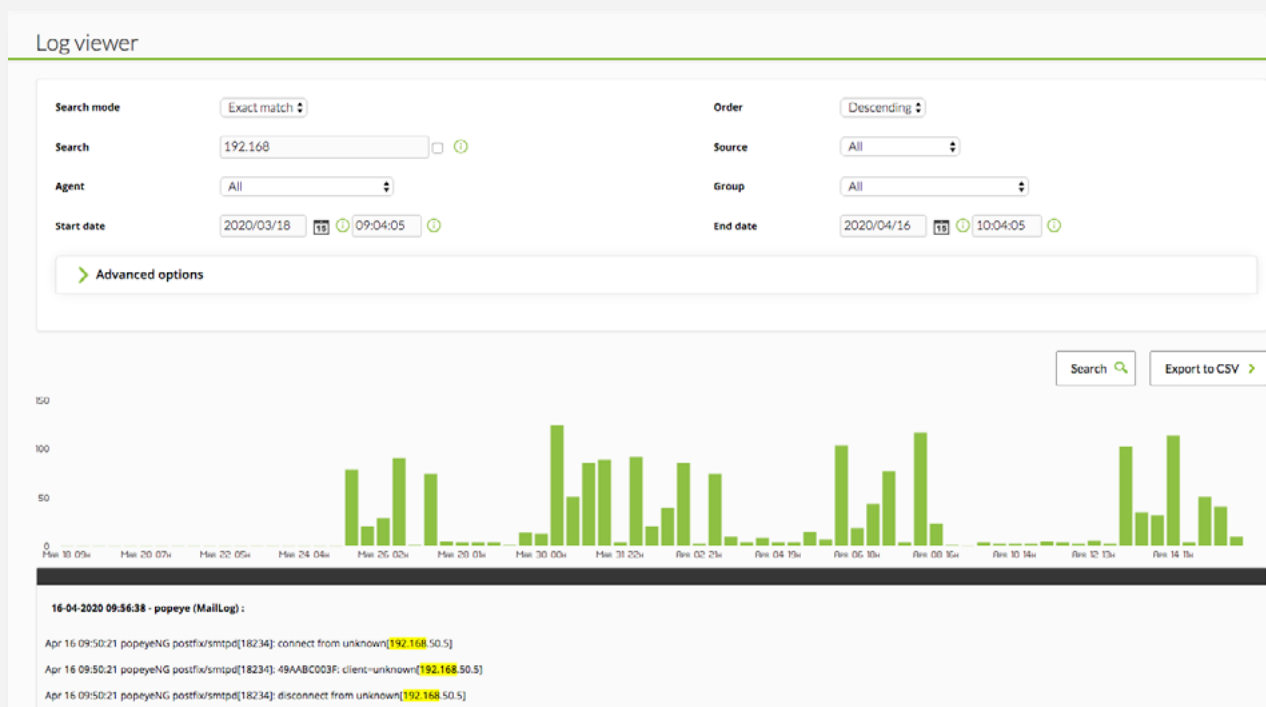
There is a new feature by means of which you can see for how long **a monitor and an agent have been in the same state within the different Pandora FMS views**: agent monitor, tree or detail monitor views.

Module name	Server type	Interval	Status	Last status change
Packet Loss		5 minutes		2 hours
Gi0/20_ifOp...rStatus		5 minutes		2 hours
Host Alive		5 minutes		2 hours
Host Alive		5 minutes		2 hours
Host Alive		5 minutes		2 hours
AvailableMemory		5 minutes		8 hours
CPU IOWait		5 minutes		9 hours
Host Alive		5 minutes		12 hours

Improved log collection

The Pandora FMS log collecting tool integrated with ElasticSearch has been improved so that it can be hosted in large environments with multiple nodes.

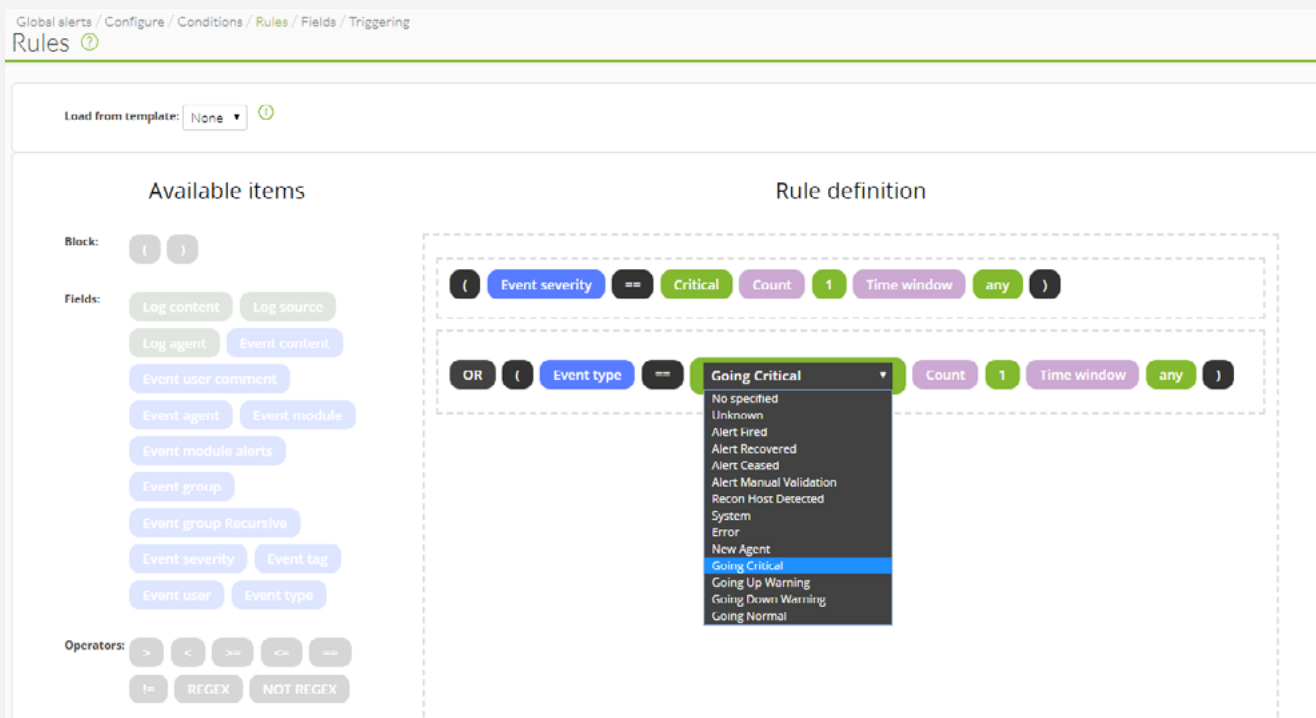
Log searches, database queries for their collecting and cache usage have also been **optimized** for log view exportation. In addition, *logstash* has been removed, thus reducing the number of dependencies.



Improvements

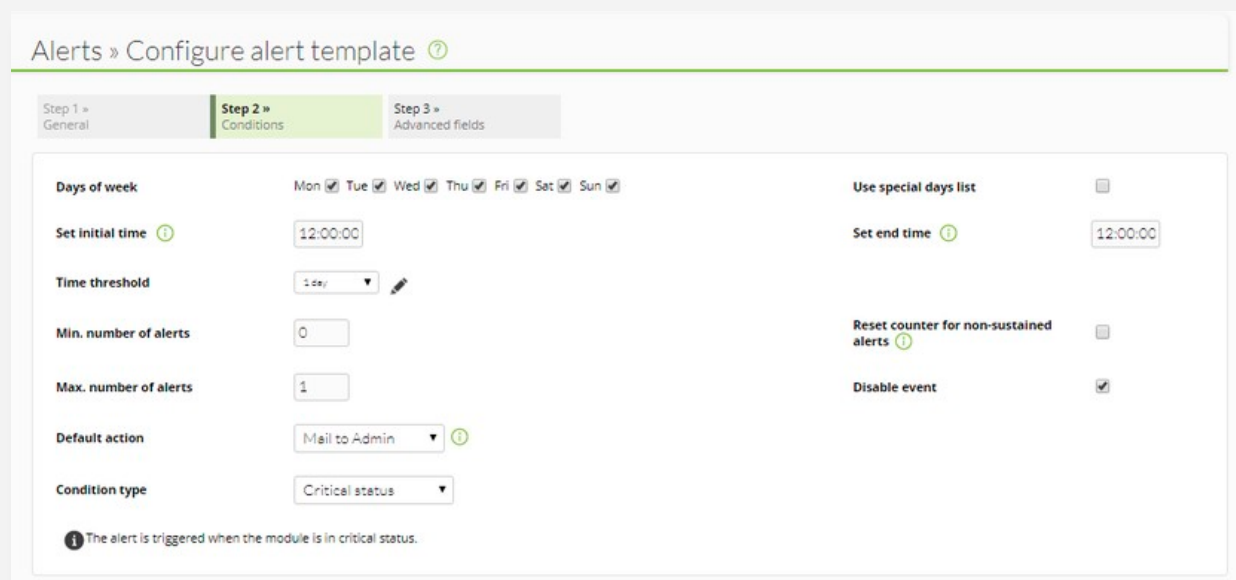
Alert Correlation

For this update, we have kept working on **improving alert correlation**: adding drop-downs to validations to make them more intuitive and new text fields to elaborate more complex checks, among other optimizations.



Event creation when triggering alerts

Event creation has been optimized so that they may optionally not be generated in alert execution. This little change will **help environment performance through much more simple alerting**. This improvement is applied to normal alerts, alert correlation and SNMP alerts.

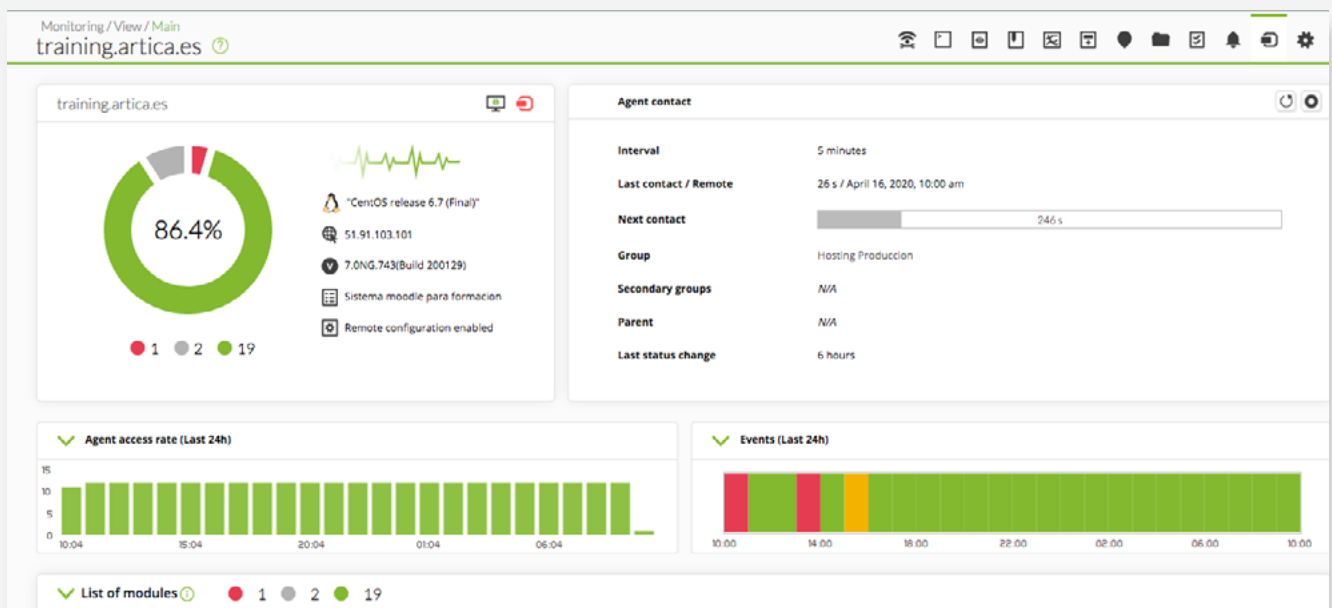


Other enhancements

A **new interval field** has been added to the group report, so that it can be applied to variable time reports.

Usability improvements have been implemented in the **module editor**. Some advanced fields have been relocated within the feature but continue to work the same.

New improved bar charts that offer more information and are visually more enjoyable.



New filters in several **important views**: group filter in alert list, and alert filter in agent view.

AWS monitoring improvements - Machines remove themselves from monitoring when AWS checks them as finished. Default thresholds on auto-detected instances, and areas without instances are now ignored to avoid displaying additional information.

New agent auto discovery scripts, so that it will show the states of the services and subservices by default if they are present on the device of the following elements:

Windows:

- Mysql
- PostgreSQL
- Oracle
- MSSQL
- Active Directory
- Exchange
- IIS

Linux:

- Mysql
- PostgreSQL
- Oracle
- MongoDB
- Apache
- Nginx
- Ldap
- Docker
- Postfix

Troubleshooting

- » Updated the version of the **eHorus** client for the Pandora FMS console that solves connectivity problems.
- » Fixed a bug that prevented deleting tasks within **Discovery**.
- » Fixed an error when running **SNMP v3 modules** when the password contained the "@" character.
- » Fixed a bug in the **Tentacle process** that caused excessive memory usage on Pandora FMS server.
- » Fixed an issue that caused erroneous behavior when performing actions in the **event view**.
- » Fixed a user permission failure in the **Metaconsole** that prevented users from performing certain actions, despite having the appropriate permissions.
- » Fixed bug where trap storm protection with **SNMP v2** did not work.
- » Fixed an error when starting modules with the **AWS task** in instances of areas outside the default one.
- » Fixed the problem by which in Metaconsole **SQL reports**, the query was made in the first stantiated node instead of the Metaconsole.
- » Fixed a bug that prevented the display of monthly **SLA reports** containing past months.
- » Fixed a bug in log-type modules in **Windows** operating system.
- » Fixed a bug that prevented deploying Windows agents when the server was installed on a **Linux** machine.
- » We thank Fernando Catoira and Julio Sánchez from Core Security Consulting Services who reported a vulnerability fixed in this update. All the process was coordinated together with Pablo Zurro from Core Advisories Team.



Remember you can download the last version of **Pandora FMS** through the Update Manager.

[MORE INFORMATION](#)

If you have any questions, please write to info@pandorafms.com

More information in: pandorafms.com

